

PLANT SCHEDULE - TREES SHRUBS PERENNIALS

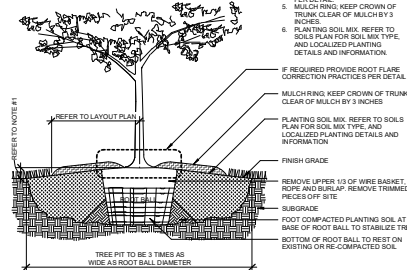
Table with columns: KEY, SCIENTIFIC NAME, COMMON NAME, SIZE, SPACING, CONDITION, NOTES, COUNT. Includes sections for Deciduous Shrubs, Evergreen Shrubs, Ornamental Trees, and Perennials + Grasses.

PLANTING NOTES

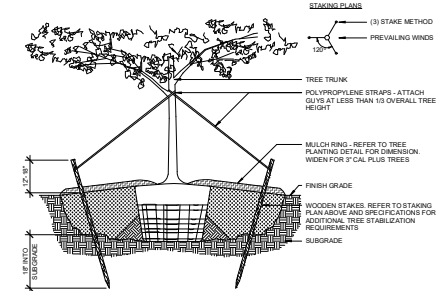
- 1. BEFORE PLANT MATERIAL IS SPECIFIED ON PLANS, SUBSTITUTIONS FOR PLANT MATERIALS WILL NOT BE ALLOWED WITHOUT PRIOR WRITTEN APPROVAL BY THE LANDSCAPE ARCHITECT.
2. PROVIDE PLANT SAMPLES OR PHOTOGRAPHS OF EACH PLANT SPECIFIED TO THE LANDSCAPE ARCHITECT FOR COMPARISON BEFORE PRIOR TO INSTALLATION.
3. PROTECT PLANT MATERIAL DURING DELIVERY TO PREVENT DAMAGE TO ROOT BALLS, TRUNKS, BRANCHES AND THE DISLOCATION OF LEAVES. PROTECT PLANT MATERIAL DURING SHIPPING WITH SHAKE CLOTH OR SHIP WITH ENCLOSED TRANSPORT PLANT PROTECTIVE AND WEATHER OF PLANT MATERIAL STORED ON SITE. HANDLE TREES WITH NYLON STRAPS, NO CHAINS OR CABLES WILL BE ALLOWED. REMOVE UNACCEPTABLE PLANT MATERIAL IMMEDIATELY FROM THE SITE.
4. PLANT MATERIAL DELIVERED TO THE SITE IS SUBJECT TO THE REVIEW OF THE LANDSCAPE ARCHITECT BEFORE DURING AND AFTER INSTALLATION.
5. VERIFY PLANTING PRODUCTS, PLANT MATERIAL, AND PLANT QUANTITIES DELIVERED TO THE SITE MATCH WHAT IS INDICATED ON THE PLANS AND SPECIFICATIONS.
6. STAKE BED LINES AND TREE LOCATIONS FOR THE LANDSCAPE ARCHITECT'S REVIEW PRIOR TO INSTALLATION. PLANTING PROCEDURES ARE SUBJECT TO THE REVIEW OF THE LANDSCAPE ARCHITECT AND THE CONTRACTOR SHALL CORRECT ANY DISCREPANCIES FOUND AT NO ADDITIONAL COST TO THE OWNER.
7. REFER TO THE PLANTING DETAILS FOR MINIMUM SIZE AND WIDTH OF PLANTING PITS AND BEDS, GUYING AND STAKING MULCHING, AND OTHER PLANTING REQUIREMENTS.
8. ROOT BALLS SHALL CONFORM TO THE SIZE STANDARDS SET FORTH IN "AMERICAN STANDARDS" FOR "NURSERY STOCK".
9. TEST FILL EACH TREE AND PLANTING PIT WITH WATER, PRIOR TO PLANTING TO ASSURE PROPER SOIL PERCOLATION. PITS WHICH DO NOT ADEQUATELY DRAIN SHALL BE FURTHER SCARIFIED ALONG OUTER EDGES AND SIDES OF PIT. DO NOT DISTURB AREA SUPPORTING TREE. REPEAT TEST. ALLOWANCES WILL NOT BE MADE FOR PLANT MATERIAL LOSS DUE TO IMPROPER DRAINAGE.
10. PLANT MATERIALS, INCLUDING RELOCATED PLANT MATERIAL, SHALL BE PLANTED IN A PROFESSIONAL MANNER TYPICAL TO THE INDUSTRY STANDARDS OF THE AREA TO ASSURE COMPLETE SURVIVABILITY OF PLANT MATERIALS AS WELL AS TO PROVIDE AN AESTHETICALLY APPROVED PROJECT.
11. REMOVE PLANTING AND LANDSCAPE DEBRIS FROM THE PROJECT SITE AND SWEEP AND WASH CLEAN PAVED AND FINISHED SURFACES AFFECTED BY THE LANDSCAPE INSTALLATION.
12. PLANTING AREA SHALL BE WEED FREE PRIOR TO PLANTING INSTALLATION AND MAINTAINED WEED FREE THROUGH FINAL ACCEPTANCE.

NOTE:

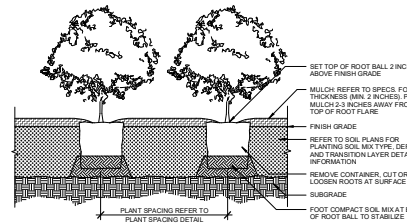
- 1. POSITION BOTTOM OF ROOT FLARE 3 INCHES ABOVE FINISHED GRADE AND CENTER OF EXCAVATED HOLE.
2. BACKFILL TREE PIT WITH SPECIFIED SOIL MIX. FOOT COMPACT THE ROOT FLARE MIX. STAKE TREES AS PER DETAILS AND SPECIFICATIONS.
3. IF REQUIRED, PROVIDE ROOT FLARE CORRECTION PROCESSES PER DETAIL.
4. MULCH RING, KEEP CROWN OF TRUNK CLEAR OF MULCH BY 3 INCHES.
5. PLANTING SOIL MIX REFER TO SOILS PLAN FOR SOIL MIX TYPE AND LOCALIZED PLANTING DETAILS AND INFORMATION.
6. IF REQUIRED, PROVIDE ROOT FLARE CORRECTION PROCESSES PER DETAIL.
7. MULCH RING, KEEP CROWN OF TRUNK CLEAR OF MULCH BY 3 INCHES.
8. PLANTING SOIL MIX REFER TO SOILS PLAN FOR SOIL MIX TYPE AND LOCALIZED PLANTING DETAILS AND INFORMATION.
9. FINISH GRADE.
10. REMOVE UPPER 1/3 OF WIRE BASKET, ROPS AND BURLAP REMOVE TRIMMED BRACES OFF SITE.
11. SUBGRADE.
12. FOOT COMPACTED PLANTING SOIL AT BASE OF ROOT BALL TO STABILIZE TREE.
13. BOTTOM OF ROOT BALL TO REST ON EXISTING OR RE-COMPACTED SOIL.



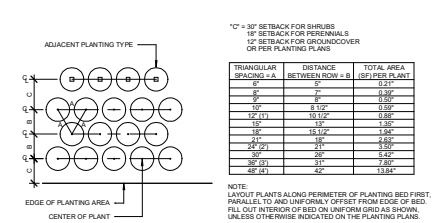
1 TREE PLANTING - LAWNS & MEADOWS SCALE: 3/4" = 1'-0"



2 TREE STABILIZATION - GUYING SCALE: 3/4" = 1'-0"



3 SHRUB PLANTING - CONTAINER SCALE: 1" = 1'-0"



4 PLANT SPACING - TRIANGULAR LAYOUT SCALE: 1" = 1'-0"

A

B

C

D

SLAM The S | L | A | M Collaborative. 80 Glastonbury Boulevard, Glastonbury, CT 06033-4410. Phone: 860 657.8077. www.slamcoll.com

MSA DESIGN MKSK. Author, Checker, Designer.



XAVIER UNIVERSITY College of Osteopathic Medicine

3800 VICTORY PARKWAY CINCINNATI, OHIO

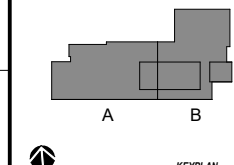
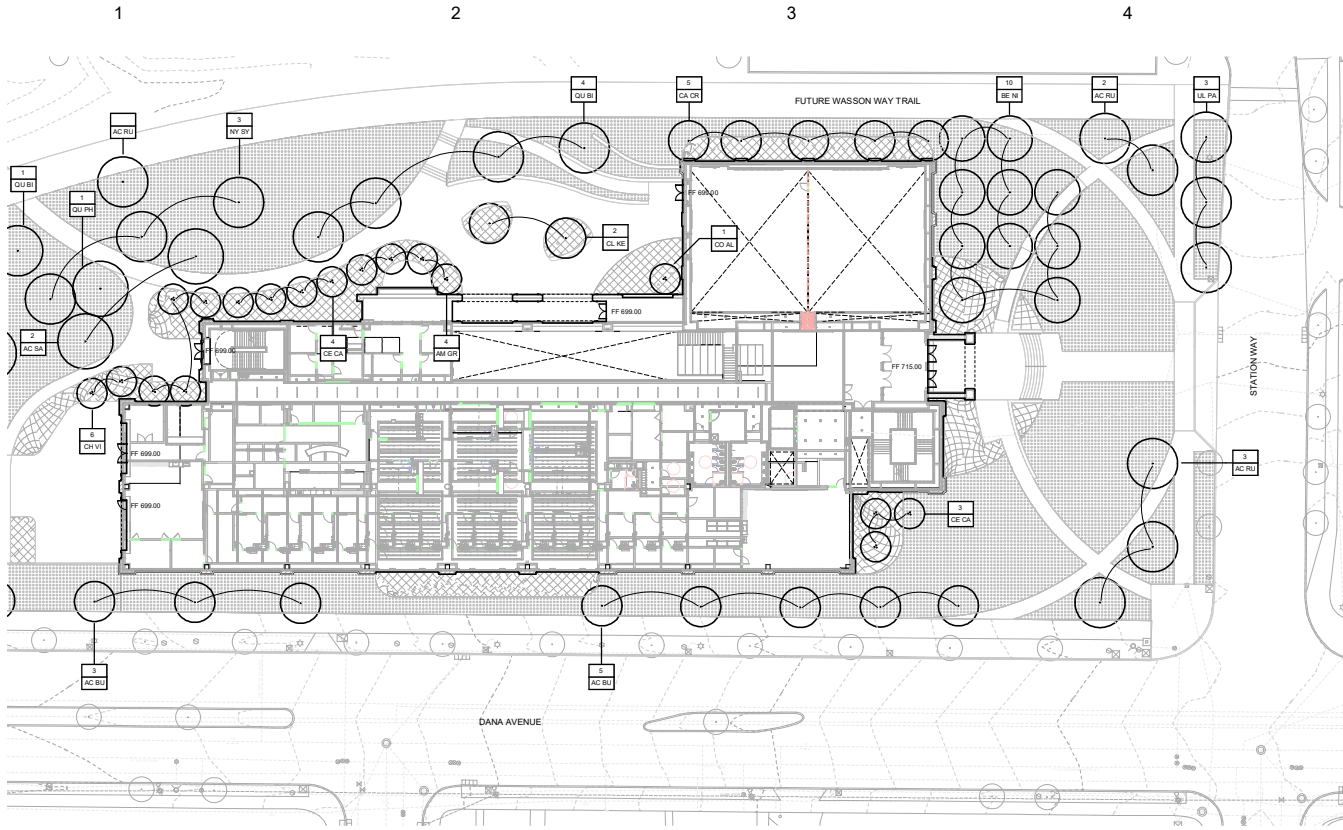


Table with columns: Number, Date, Issued For. Includes a date stamp: 09/20/2024.

PLANT SCHEDULE

Table with columns: Date, Scale, Drawing Number. Includes: Date: 09/20/2024, Scale: As indicated, Drawing Number: 21.

Vertical text on the right edge of the page.



1 PLANTING PLAN - EAST
SCALE: 1" = 20'-0"

PLANTING NOTES

1. BEFORE PLANT MATERIAL IS SPECIFIED ON PLANS, SUBSTITUTIONS FOR PLANT MATERIALS WILL NOT BE ALLOWED WITHOUT PRIOR WRITTEN APPROVAL BY THE LANDSCAPE ARCHITECT.
2. PROVIDE PLANT SAMPLES OR PHOTOGRAPHS OF EACH PLANT SPECIFIED TO THE LANDSCAPE ARCHITECT FOR COMPLIANCE BEFORE INSTALLATION.
3. PROTECT PLANT MATERIAL DURING DELIVERY TO PREVENT DAMAGE TO ROOT BALLS, TRUNKS, BRANCHES AND THE DECIDUATION OF LEAVES. PROTECT PLANT MATERIAL DURING SHIPPING WITH SHAKE CLOTH OR SHIP WITH ENCLOSED TRANSPORT. MAINTAIN PROTECTION AND HEALTH OF PLANT MATERIAL STORED ON SITE. HANDLE TREES WITH NYLON STRAPS. NO CHAINS OR CABLES WILL BE ALLOWED. REMOVE UNACCEPTABLE PLANT MATERIAL IMMEDIATELY FROM THE SITE.
4. PLANT MATERIAL DELIVERED TO THE SITE IS SUBJECT TO THE REVIEW OF THE LANDSCAPE ARCHITECT BEFORE, DURING AND AFTER INSTALLATION.
5. VERIFY PLANTING PRODUCTS, PLANT MATERIAL, AND PLANT QUANTITIES DELIVERED TO THE SITE MATCH WHAT IS INDICATED ON THE PLANS AND SPECIFICATIONS.
6. STAKE BED LINES AND TREE LOCATIONS FOR THE LANDSCAPE ARCHITECT'S REVIEW PRIOR TO INSTALLATION. PLANTING PROCEDURES ARE SUBJECT TO THE REVIEW OF THE LANDSCAPE ARCHITECT AND THE CONTRACTOR SHALL CORRECT ANY DEFICIENCIES FOUND AT NO ADDITIONAL COST TO THE OWNER.
7. REFER TO THE PLANTING DETAILS FOR MINIMUM SIZE AND WIDTH OF PLANTING PITS AND BEDS, GUYING AND STAKING, MULCHING, AND OTHER PLANTING REQUIREMENTS.
8. ROOT BALLS SHALL CONFORM TO THE SIZE STANDARDS SET FORTH IN "AMERICAN STANDARDS" FOR "NURSERY STOCK".
9. TEST FILL EACH TREE AND PLANTING PIT WITH WATER, PRIOR TO PLANTING TO ASSURE PROPER SOIL PERCOLATION. PITS WHICH DO NOT ADEQUATELY DRAIN SHALL BE FURTHER SCARIFIED ALONG OUTER EDGES AND SIDES OF PIT, DO NOT DISTURB AREA SURROUNDING TREE BALL. REPEAT TEST. ALLOWANCES WILL NOT BE MADE FOR PLANT MATERIAL LOSS DUE TO IMPROPER DRAINAGE.
10. PLANT MATERIALS, INCLUDING RELOCATED PLANT MATERIAL, SHALL BE PLANTED IN A PROFESSIONAL MANNER TYPICAL TO THE INDUSTRY STANDARDS OF THE AREA TO ASSURE COMPLETE SURVIVABILITY OF PLANT MATERIALS AS WELL AS TO PROVIDE AN AESTHETICALLY APPROVED PROJECT.
11. REMOVE PLANTING AND LANDSCAPE DEBRIS FROM THE PROJECT SITE AND SWEEP AND WASH CLEAN PAVED AND FINISHED SURFACES AFFECTED BY THE LANDSCAPE INSTALLATION.
12. PLANTING AREAS SHALL BE WEED FREE PRIOR TO PLANTING INSTALLATION AND MAINTAINED WEED FREE THROUGH FINAL ACCEPTANCE.

PLANT LEGEND - TREES SHRUBS PERENNIALS

KEY	SCIENTIFIC NAME	COMMON NAME
DECIDUOUS TREES		
AC BU	ACER BUERGERIANUM 'ABMTF' PP16, 629	'AERYN' TRIDENT MAPLE
AC RU	ACER RUBRUM 'ARMSTRONG GOLD'	'ARMSTRONG GOLD' RED MAPLE
AC SA	ACER SACCHARUM	SUGAR MAPLE
BE NI	BETULA NIGRA 'DURA-HEAT'	'DURA-HEAT' RIVER BIRCH
CA CR	CARPINUS CAROLINIANA 'ORANGE CRUSH'	'ORANGE CRUSH' AMERICAN HORNBEAM
CL KE	CLADRASTIS KENTUCKEA	YELLOWWOOD
NY SY	NYSSA SYLVATICA 'RED RAGE'	'RED RAGE' BLACKGUM
QU BI	QUERCUS BICOLOR 'GREEN NOVA'	'SUN BREAKER' SWAMP WHITE OAK
QU PH	QUERCUS PHELLOS 'CRISTA'	'HIGHTOWER' WILLOW OAK
TA DI	TAXODIUM DISTICHUM	BALD CYPRESS
UL PA	ULMUS PARVIFOLIA 'ALLEE'	'ALLEE' LACEBARK ELM
ORNAMENTAL TREES		
AM GR	AMELANCHER X GRANDIFLORA 'AUTUMN BRILLIANCE'	AUTUMN BRILLIANCE SERVICEBERRY
CE CA	CERCIS CANADENSIS	EASTERN REDBUD
CH VI	CHONANTHUS VIRGINICUS 'RACHEL'S RIBBONCLOUD'	'RACHEL'S RIBBONCLOUD' FRINGE TREE
CO AL	CORNUS ALTERNIFOLIA	PAGODA DOGWOOD

SLAM
The S | L | A | M Collaborative

80 Glastonbury Boulevard
Glastonbury, CT 06033-4410
Phone: 860 657-8077
www.slamcoll.com

Drawn
Author

Checked
Checker

MSA DESIGN

MKSK

XAVIER

XAVIER UNIVERSITY
College of Osteopathic Medicine

3800 VICTORY PARKWAY
CINCINNATI, OHIO

KEYPLAN

Number Date Issued For

1 09/20/2024 70% CD Set

ISSUE TITLE

PLANTING PLAN

Date: 09/20/2024
Scale: As Indicated
Revision: 23157.00

Drawing Number: **22**

X:\Projects\2024\23157-00 - Xavier University - College of Osteopathic Medicine\Drawings\23157-00_LAND_ARCH\DWG_23157-00_P1.dwg